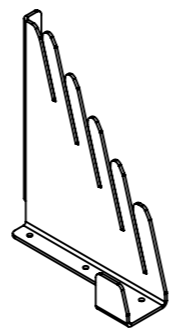


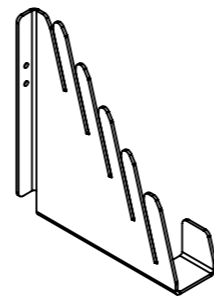
**COMPLETE TROLLEY**

**PARTS LIST - PART NUMBERS IN BRACKETS**

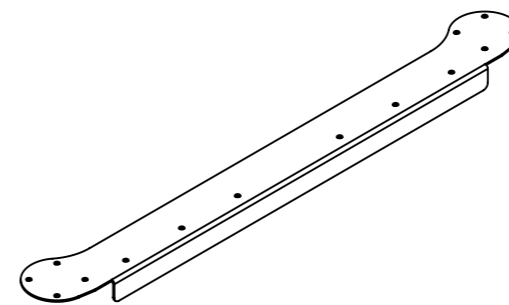
**TOOLS NEEDED:  
2 X 13MM SPANNER  
8MM HEX DRIVE**



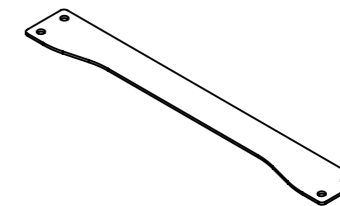
**X 2**  
(TH4848)



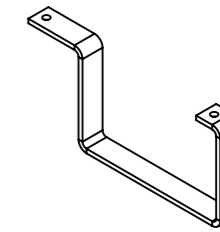
**X 2**  
(TH4849)



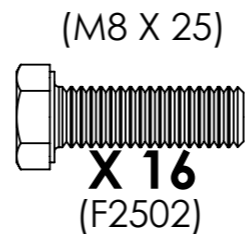
**X 2**  
(TH4850)



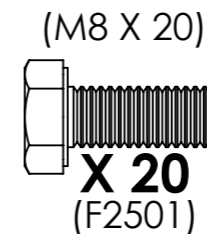
**X 2**  
(TH4851)



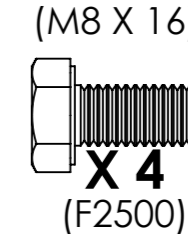
**X 4**  
(TH4862)



**X 16**  
(F2502)



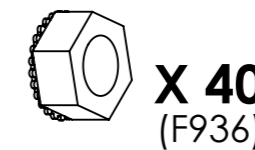
**X 20**  
(F2501)



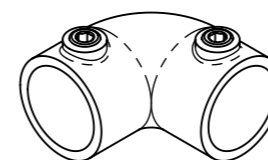
**X 4**  
(F2500)



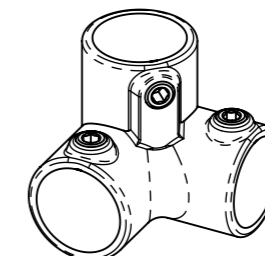
**X 40**  
(F891)



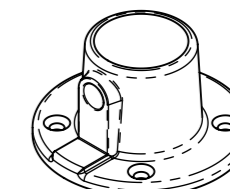
**X 40**  
(F936)



**X 2**  
(T12500)



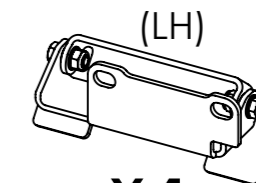
**X 2**  
(T12800)



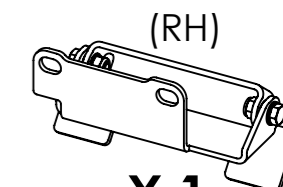
**X 2**  
(T13100)



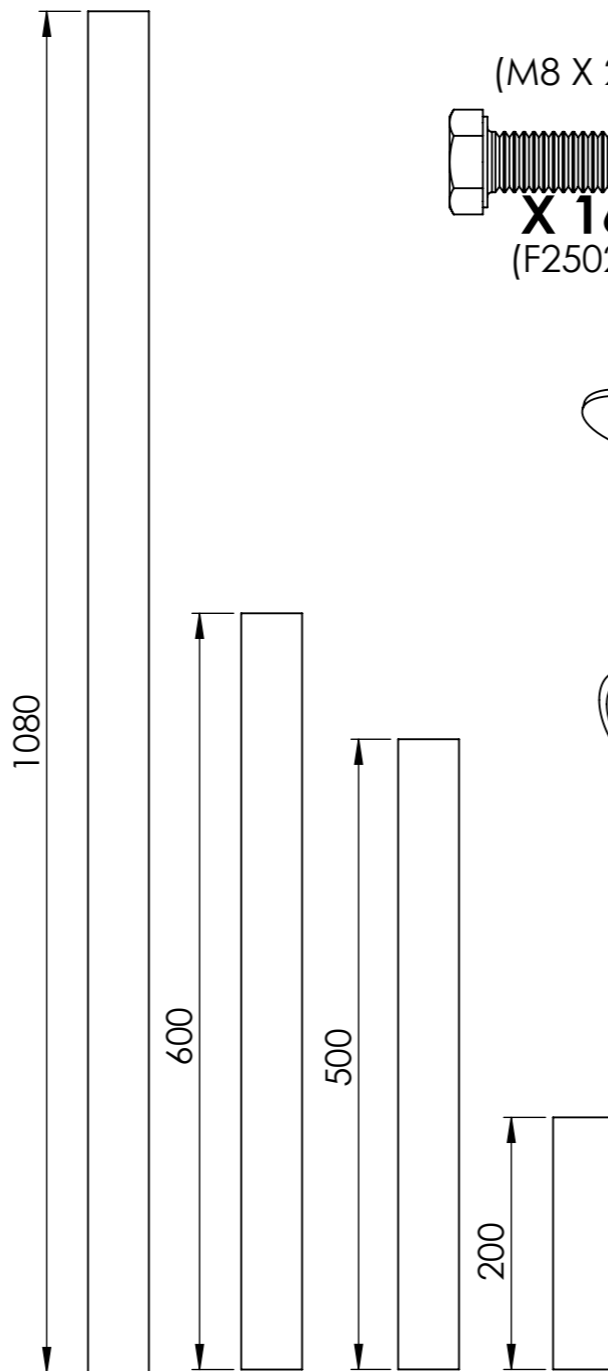
**X 4**  
(T13301)



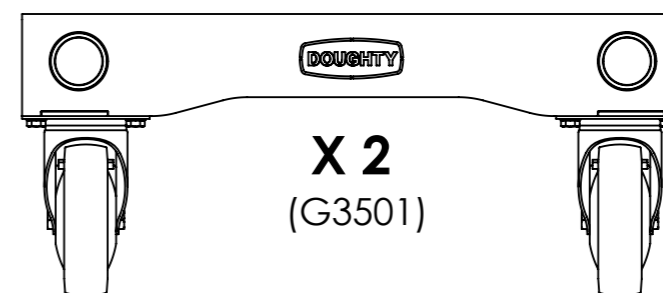
**X 1**  
(TH4875)  
(LH)



**X 1**  
(TH4876)  
(RH)



**X 2** (T24000) **X 2** (T24000) **X 2** (T24000) **X 2** (T24000)



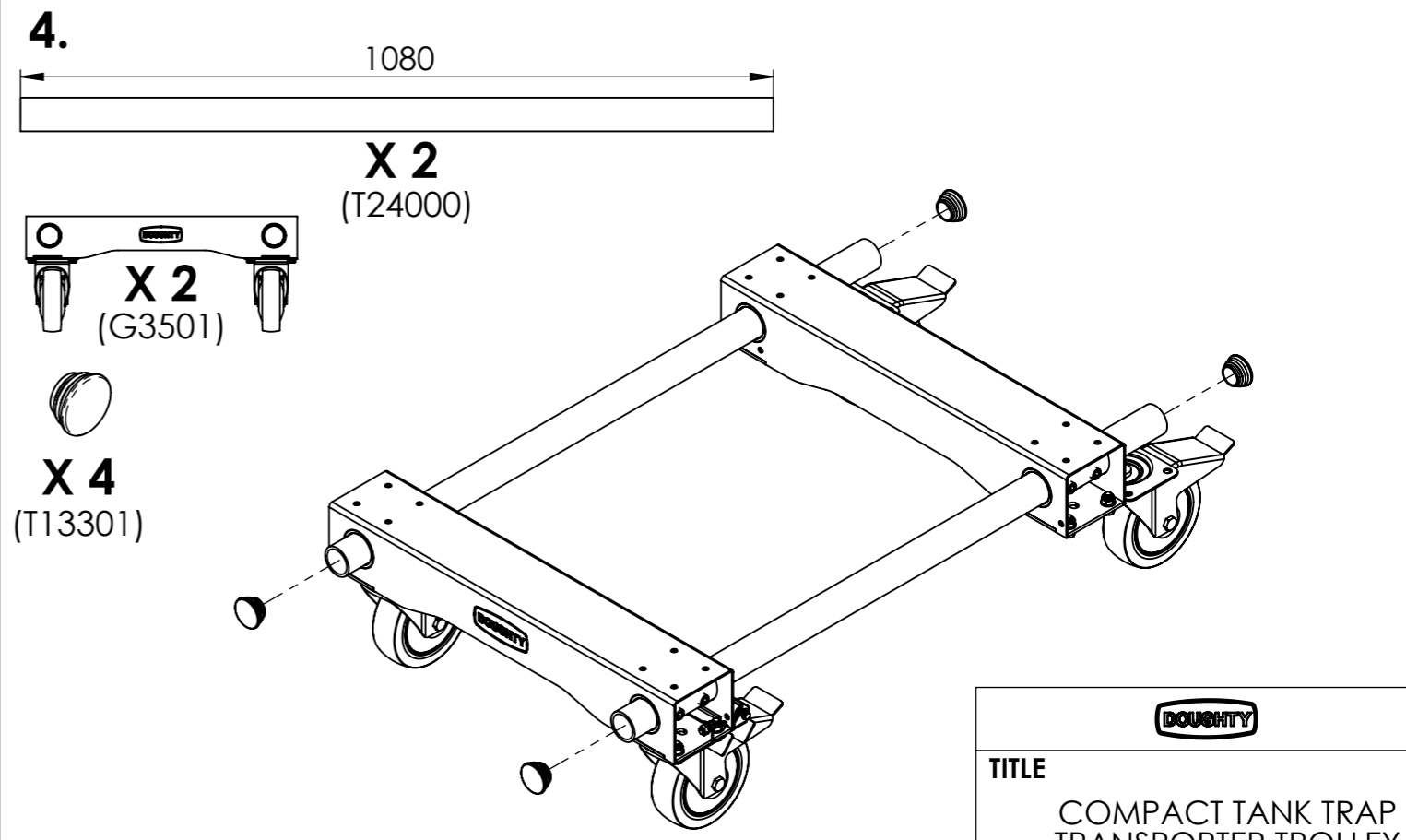
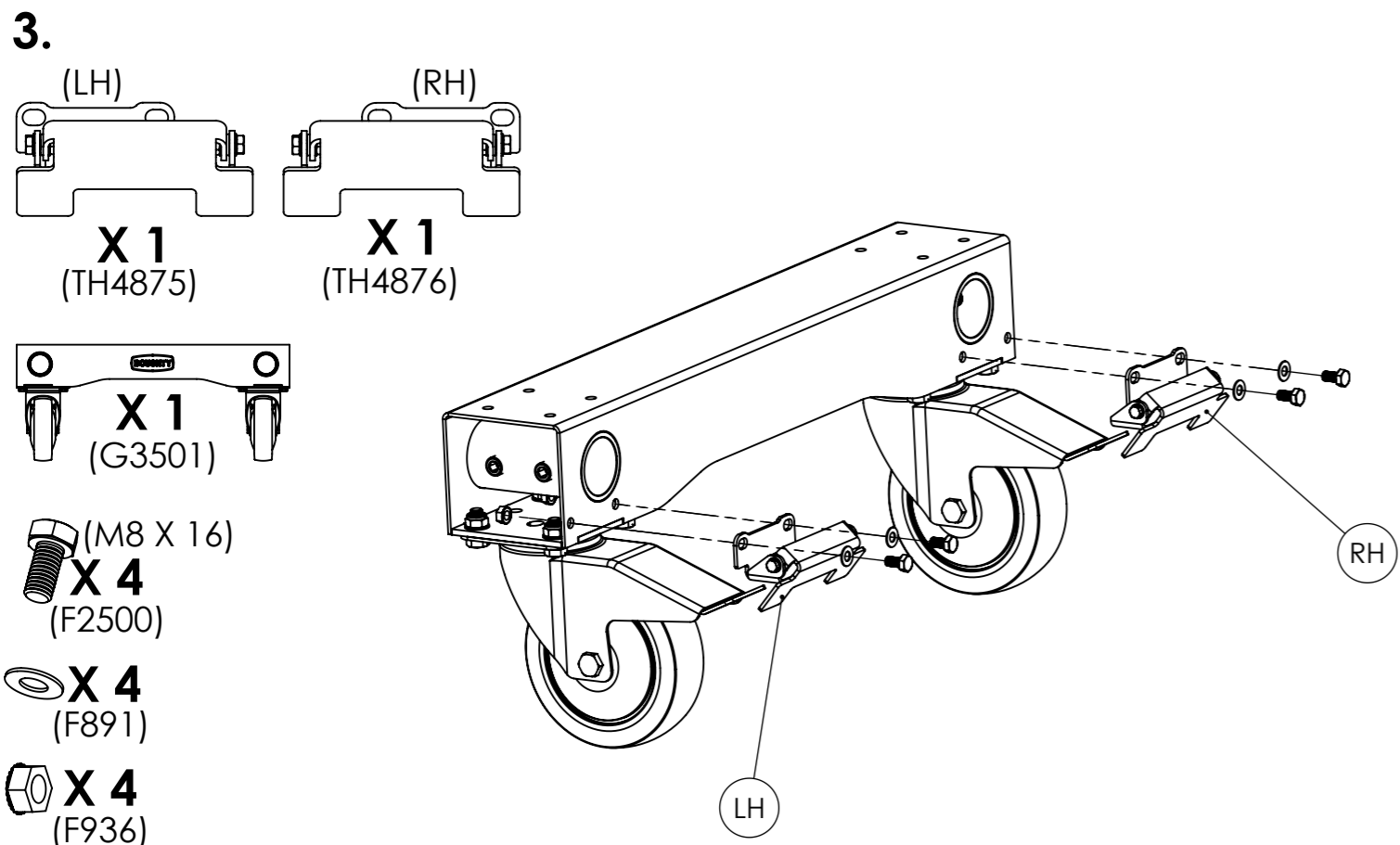
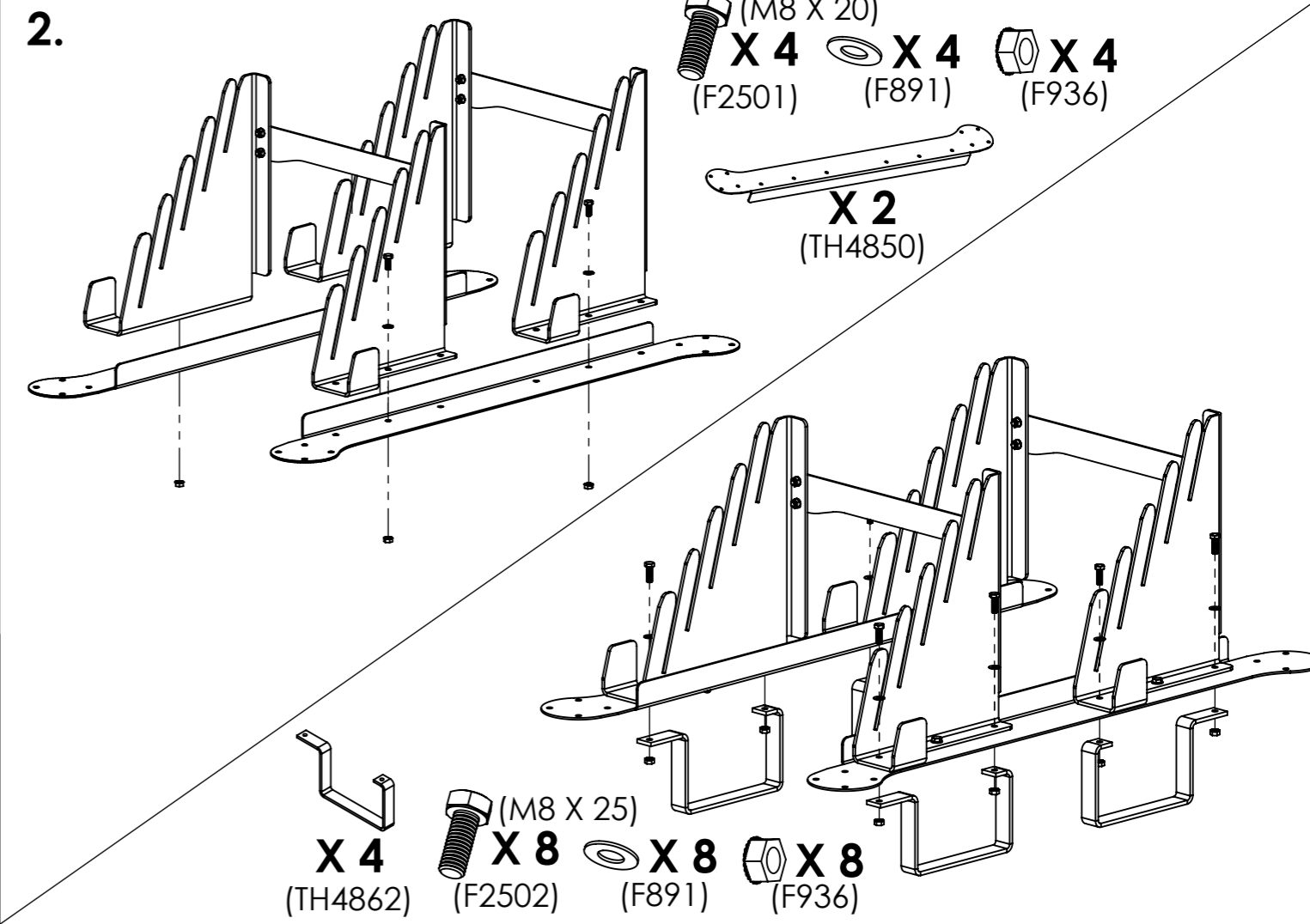
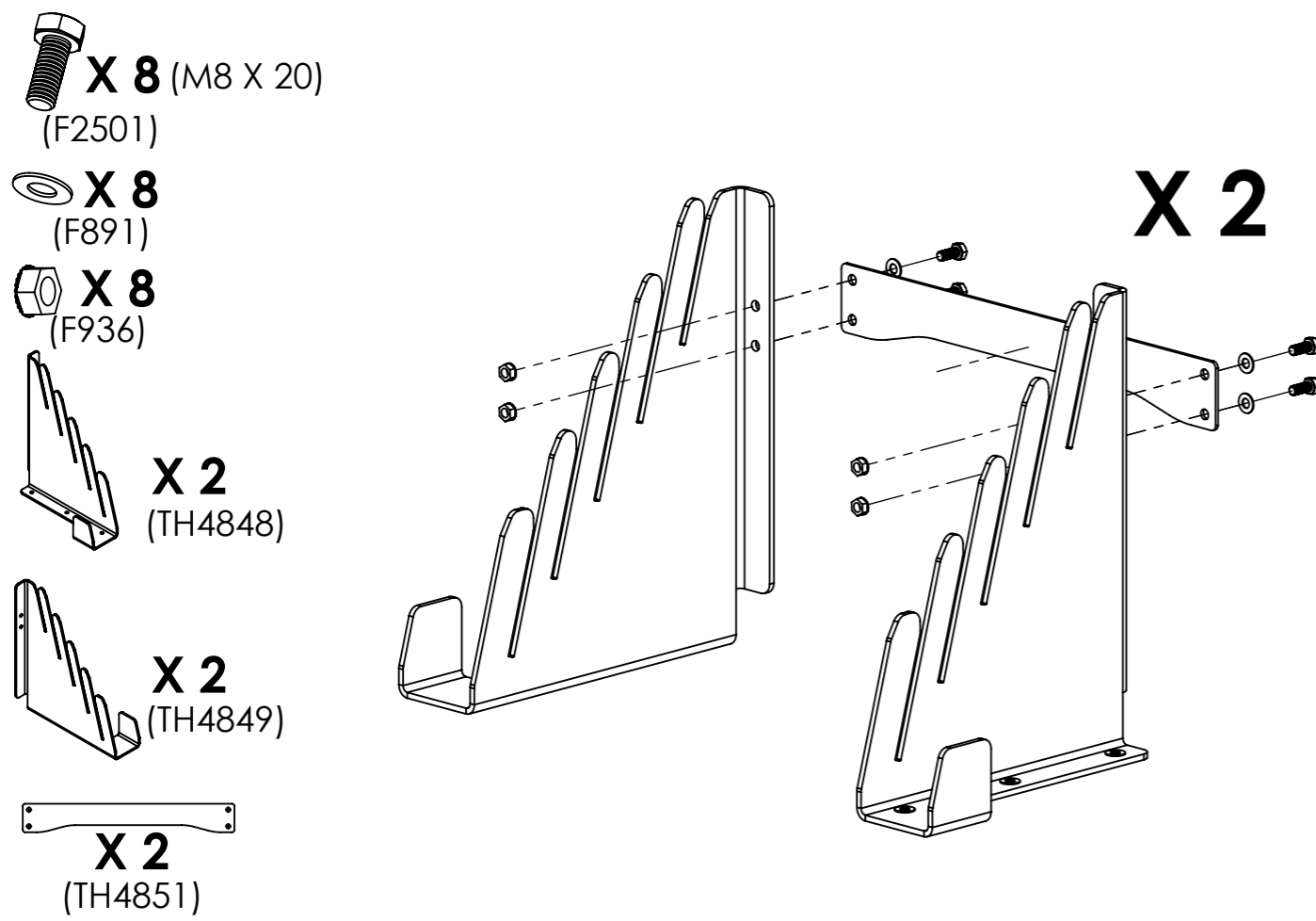
**X 2**  
(G3501)



**TITLE**  
COMPACT TANK TRAP  
TRANSPORTER TROLLEY


**DWG NO**  
T54269 SHEET 1 OF 6

**1. HAND TIGHTEN ALL FASTENERS UNTIL FINISHED**




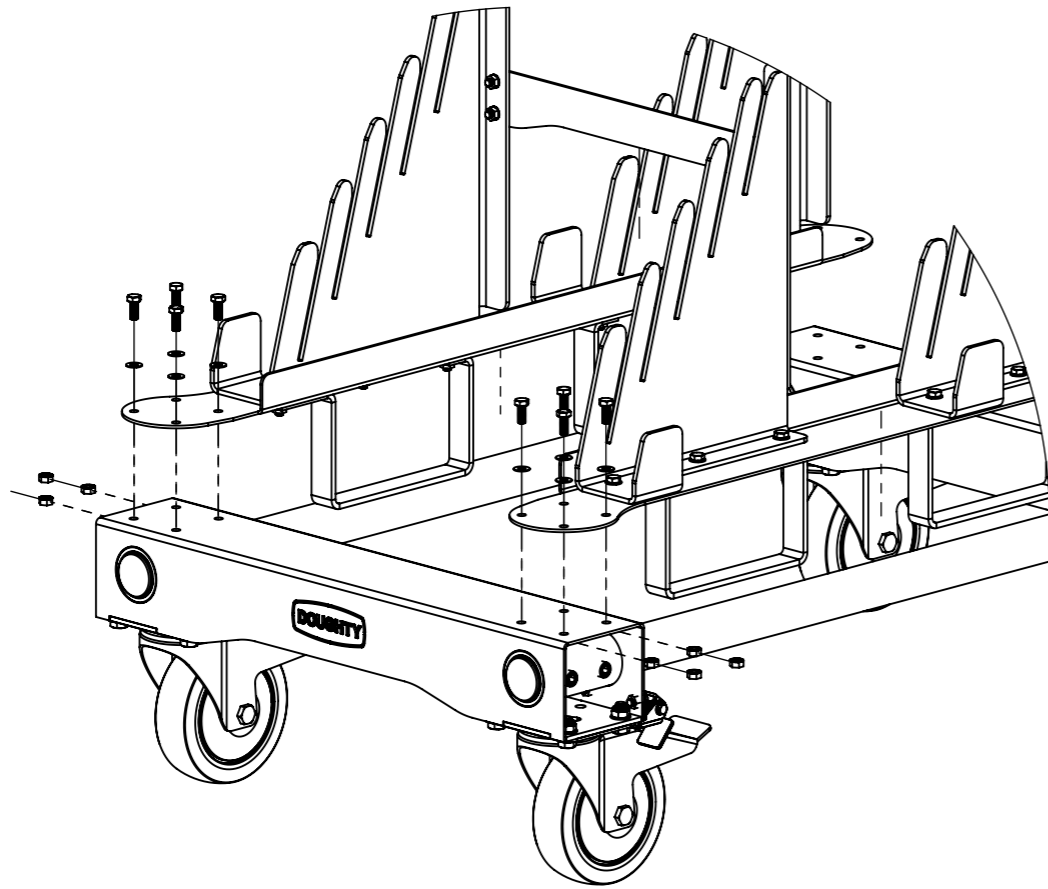
<b>DOUGHTY</b>	
TITLE	
COMPACT TANK TRAP TRANSPORTER TROLLEY	
DWG NO	
T54269	SHEET 2 OF 6

**5. HAND TIGHTEN ALL FASTENERS UNTIL FINISHED**

 **X 8** (M8 X 20)  
(F2501)

 **X 8**  
(F891)

 **X 8**  
(F936)




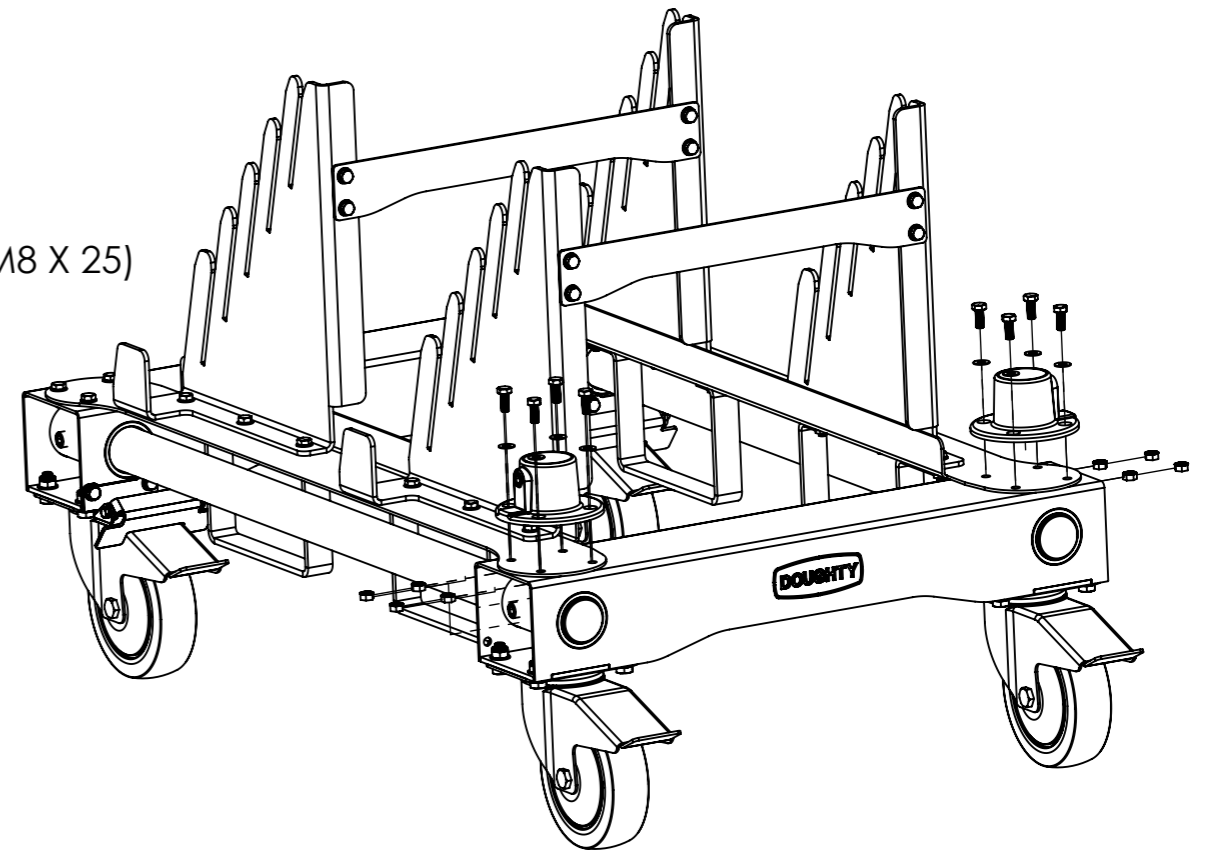
**6.**

 **X 2**  
(T13100)

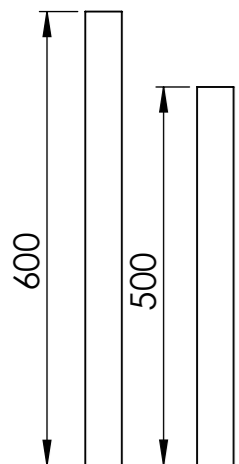
 **X 8** (M8 X 25)  
(F2502)

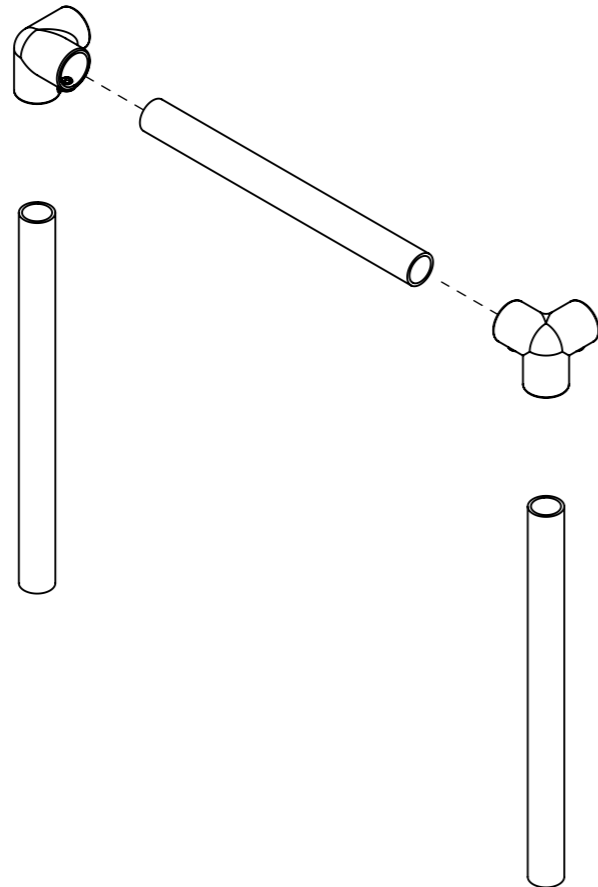
 **X 8**  
(F891)

 **X 8**  
(F936)



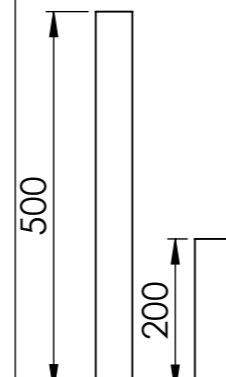
**7.**

  
**X 2** **X 1**  
(T24000)

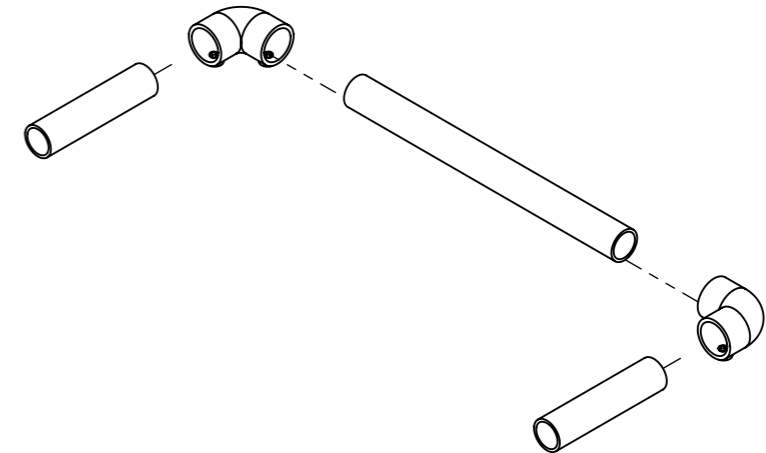


 **X 2**  
(T12800)

**8.**

  
**X 1** **X 2**  
(T24000)

 **X 2**  
(T12500)

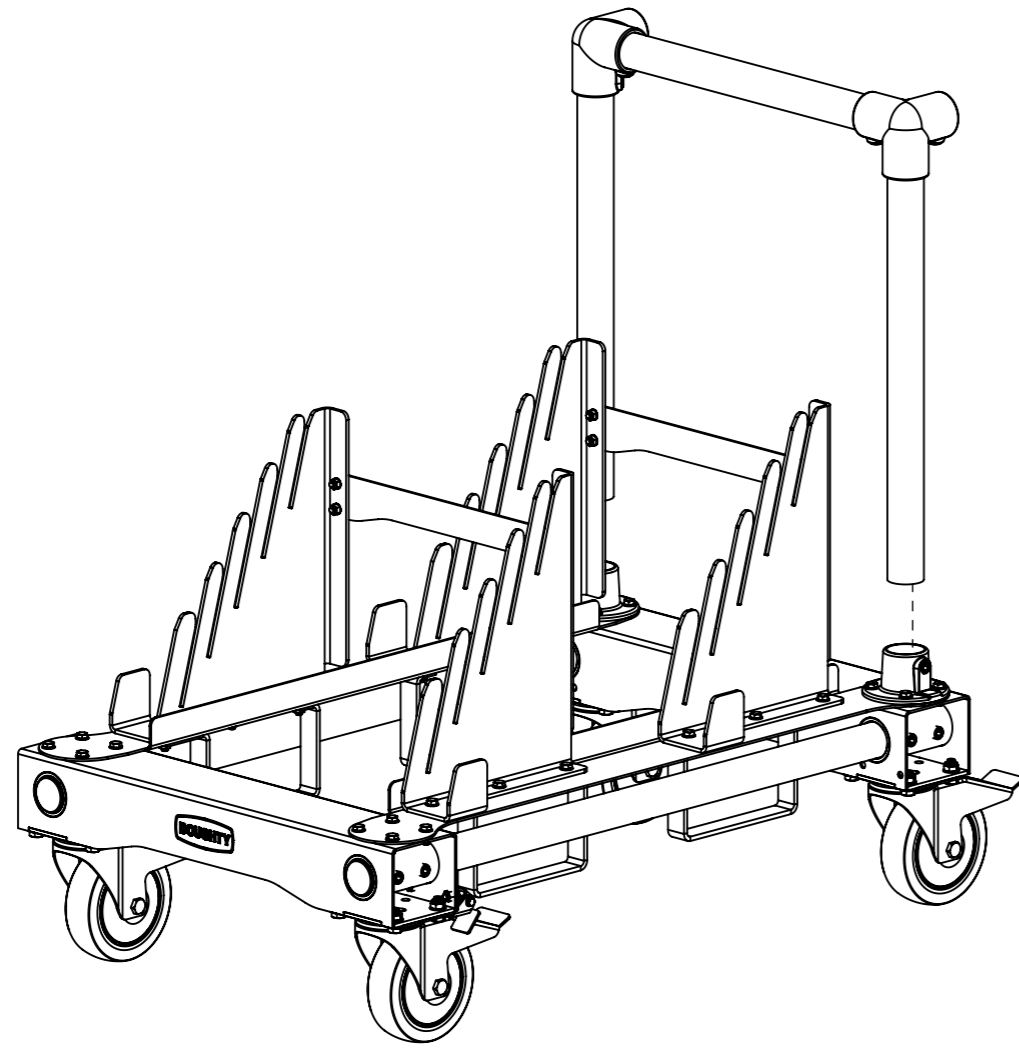


**DOUGHTY**

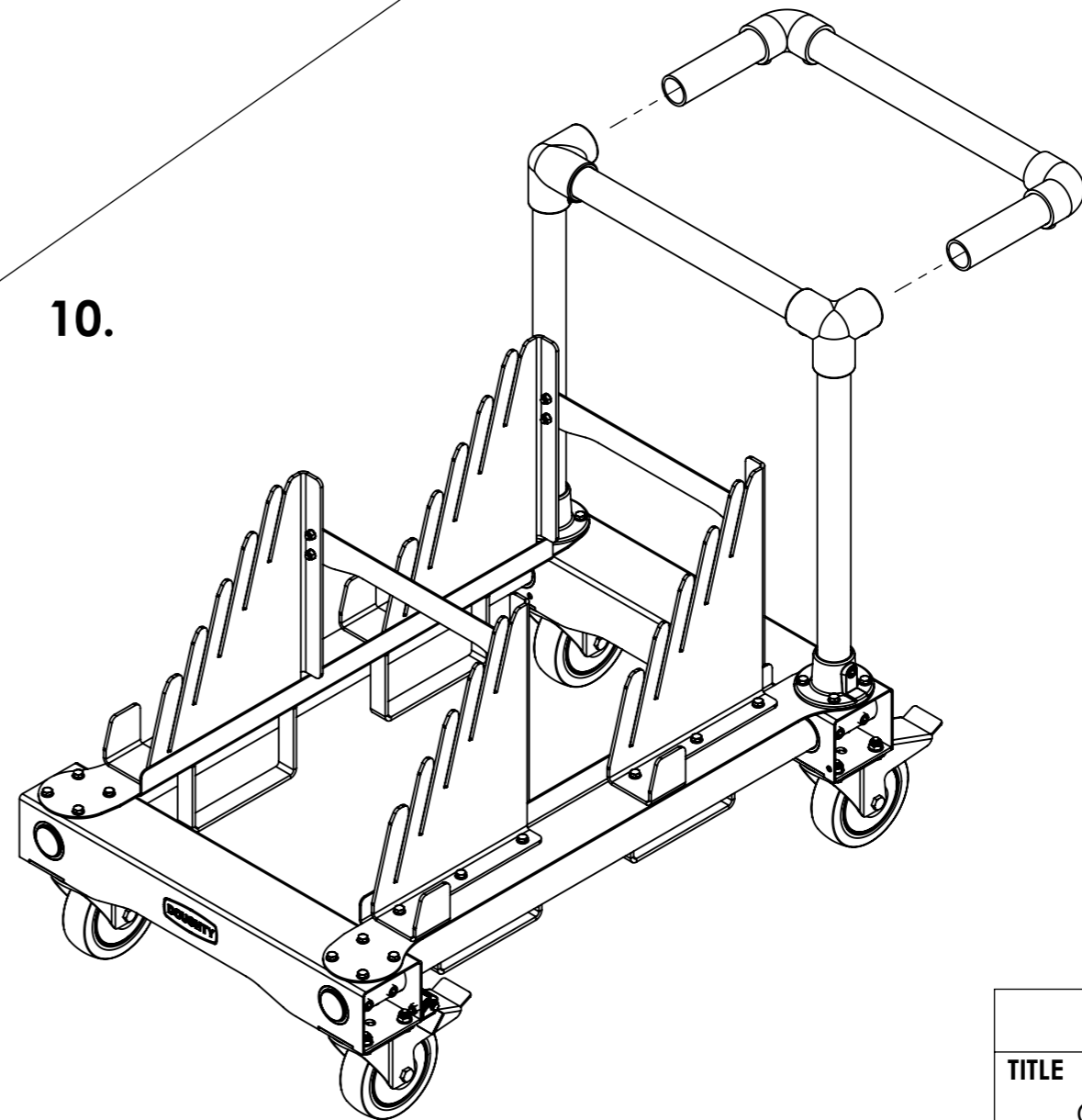
**TITLE**  
COMPACT TANK TRAP  
TRANSPORTER TROLLEY

**DWG NO**  
T54269 SHEET 3 OF 6

9.



10.



**WHEN FINISHED: ENSURE ALL FASTENERS ARE NOW FULLY TIGHTENED**

**DOUGHTY**

**TITLE**  
COMPACT TANK TRAP  
TRANSPORTER TROLLEY

**DWG NO**  
T54269 SHEET 4 OF 6

1.

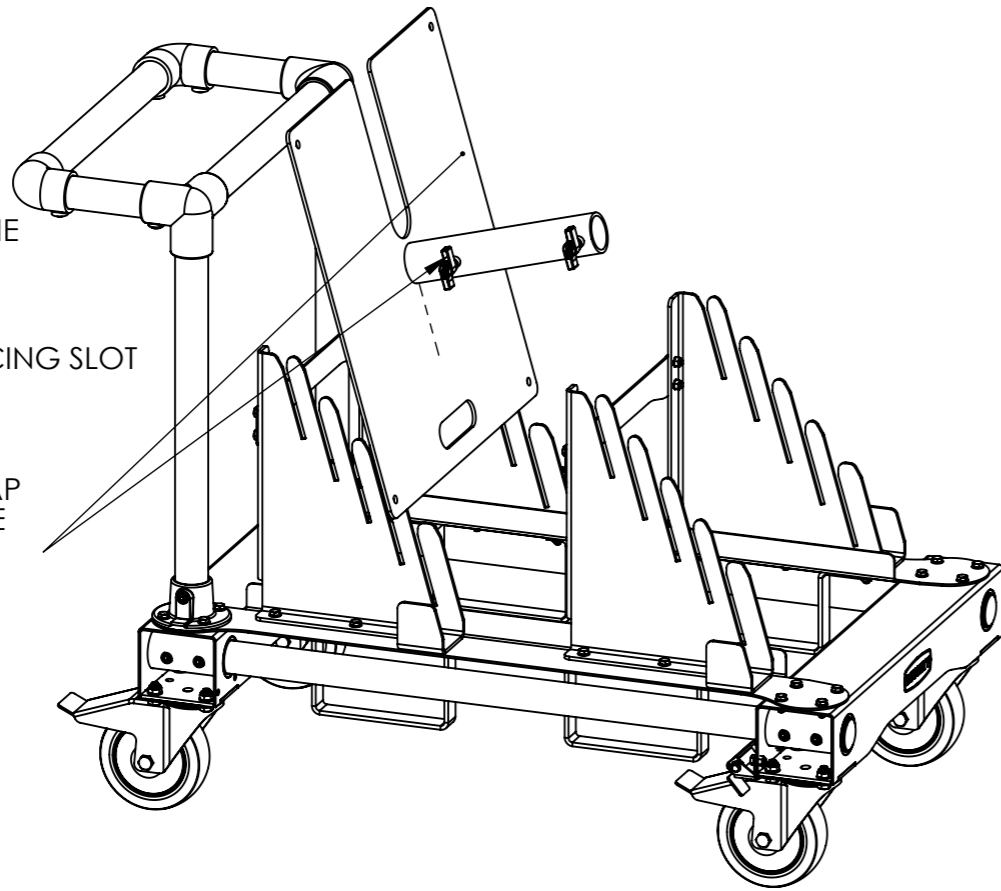


**POTENTIAL FINGER TRAP**

i) START STACKING FROM THE FRONT OF THE RACK.

ii) ENSURE TANK TRAP IS FACING SLOT SIDE UP.

iii) PLEASE ENSURE TANK TRAP KNOB IS PARALLEL TO BASE PLATE.

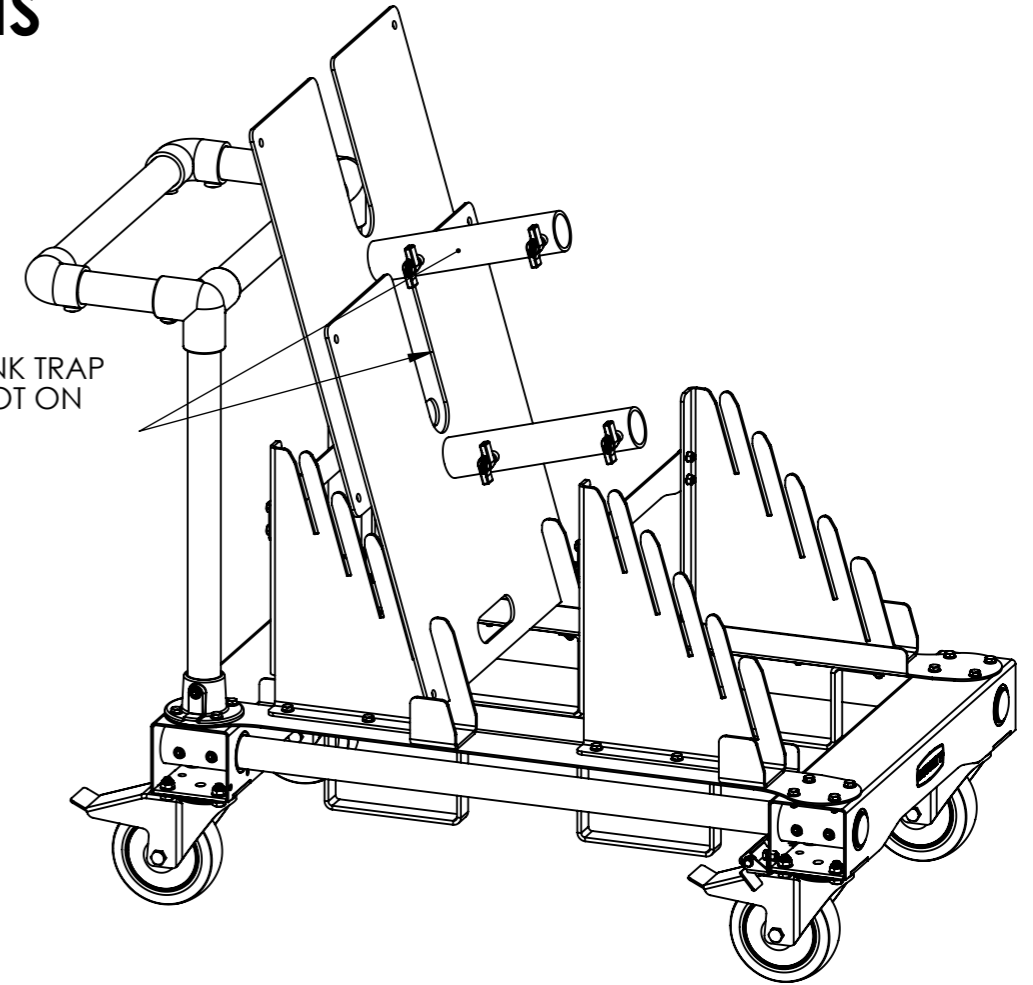


# STACKING INSTRUCTIONS

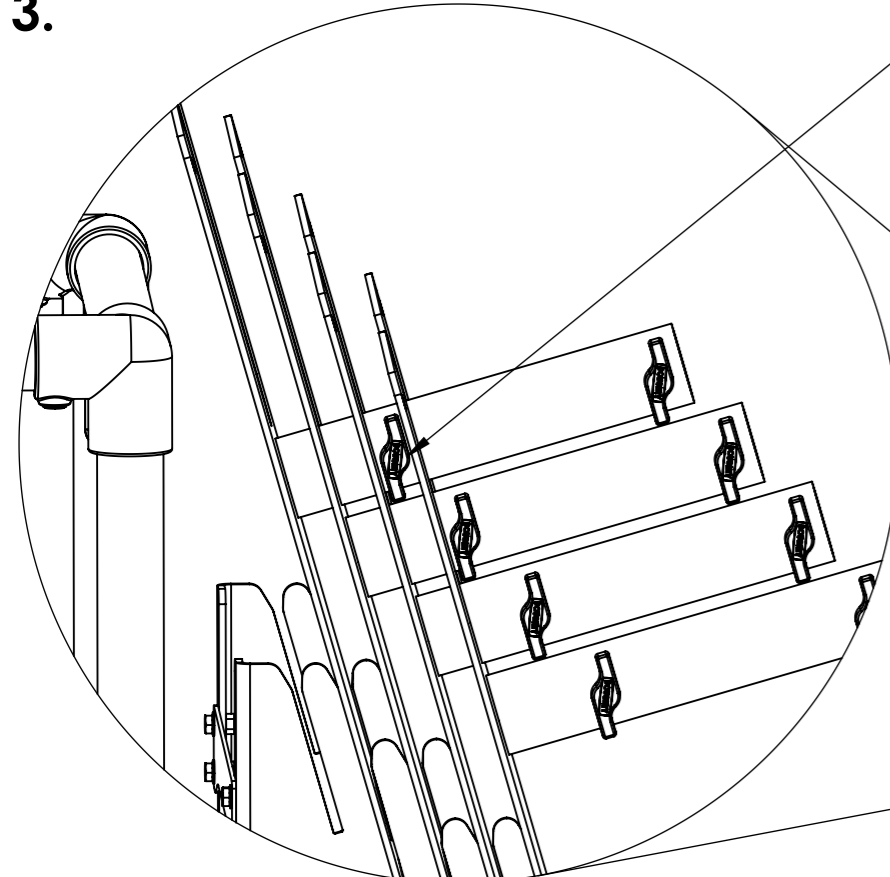
2.

i) LINE UP SECOND TANK TRAP RECEIVER WITH THE SLOT ON THE FIRST PLATE

ii) REPEAT STEP

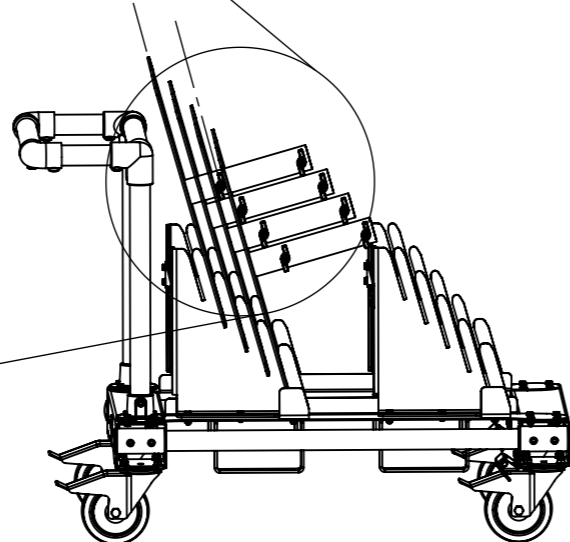


3.



i) THE BOTTOM KNOB OF THE FOURTH TANK TRAP SLOTS BETWEEN THE BASE PLATES OF THE 1ST & 2ND TANK TRAPS.

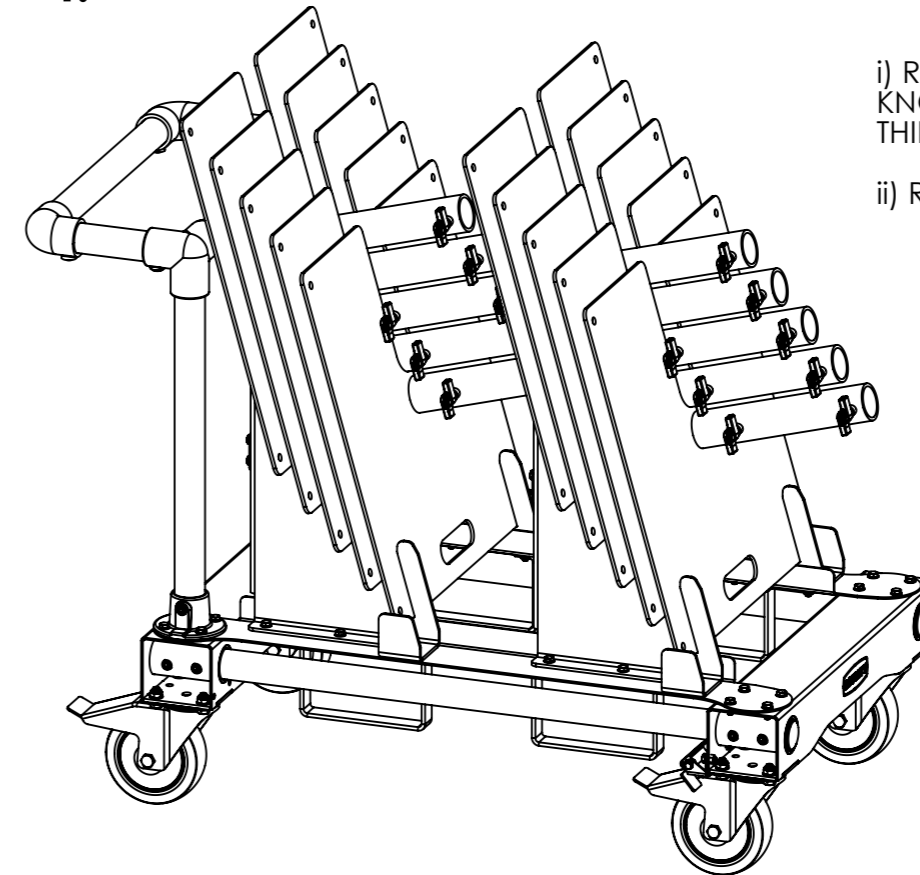
ii) ENSURE THE KNOB IS PARALLEL TO THE PLATE, OR IT WILL FOUL.



4.

i) REPEAT STEP 3 FOR FINAL PLATE (BOTTOM KNOB WILL FIT BETWEEN SECOND AND THIRD BASE PLATES).

ii) REPEAT ALL STEPS FOR FRONT RACK



TITLE

COMPACT TANK TRAP  
TRANSPORTER TROLLEY

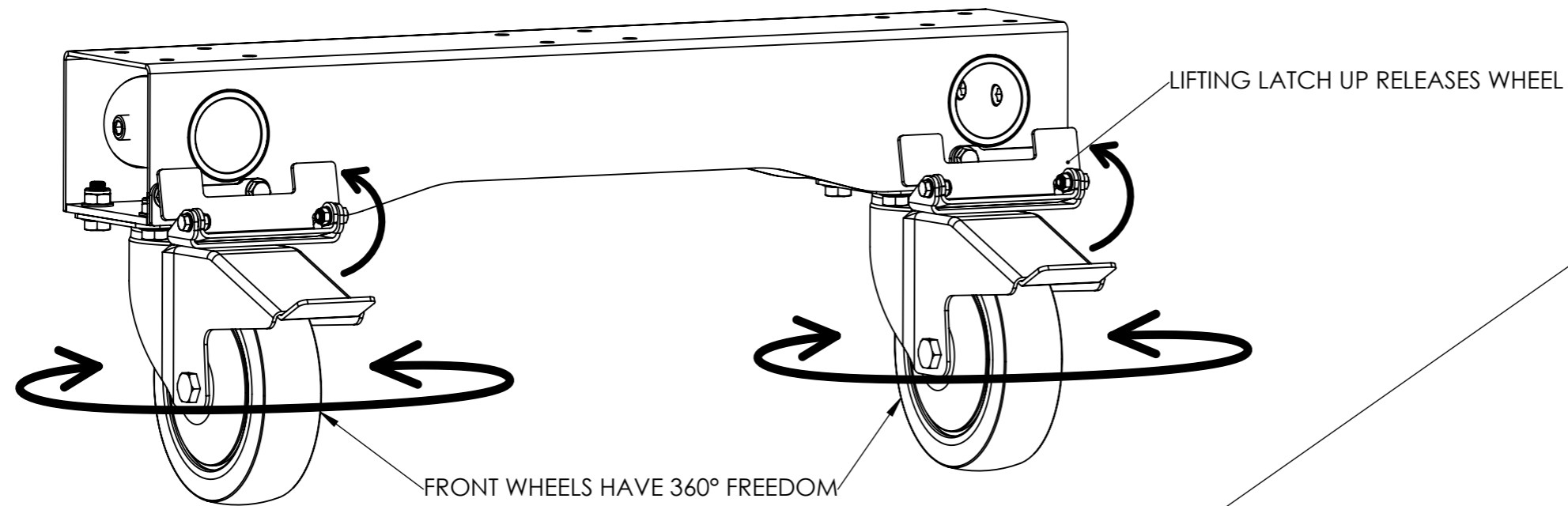
DWG NO

T54269

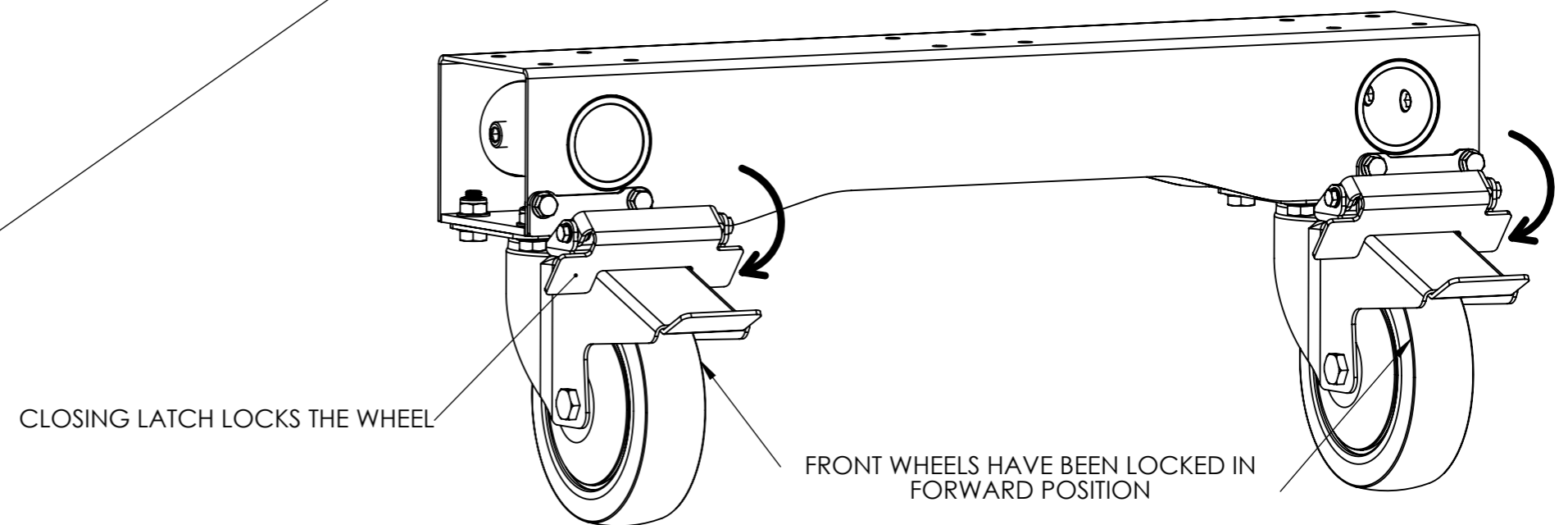
SHEET 5 OF 6

# CASTOR LOCK INSTRUCTIONS

## CASTOR LOCK OPEN



## CASTOR LOCK CLOSED



THE CASTOR LOCKS ARE USED TO CONVERT A TROLLEY FROM A 4-WHEEL STEER TO A 2-WHEEL STEER CONFIGURATION. THIS LOCKS THE FRONT WHEELS, ALLOWING ONLY REAR WHEELS TO STEER FOR MORE CONTROL.

USING 4-WHEEL STEER MAYBE PREFERABLE FOR PARKING OR STEERING THE TROLLEY WHEN A SECOND PERSON CAN ASSIST.

THE USE OF THE CASTOR LOCKS IS RECOMMENDED ON SLOPED OR UNEVEN SURFACES, TO CONTROL THE TROLLEY FROM UNEXPECTEDLY VEERING OFF COURSE.

**DOUGHTY**

TITLE CASTOR LOCK INSTRUCTIONS

DWG NO G3508

SHEET 6 OF 6