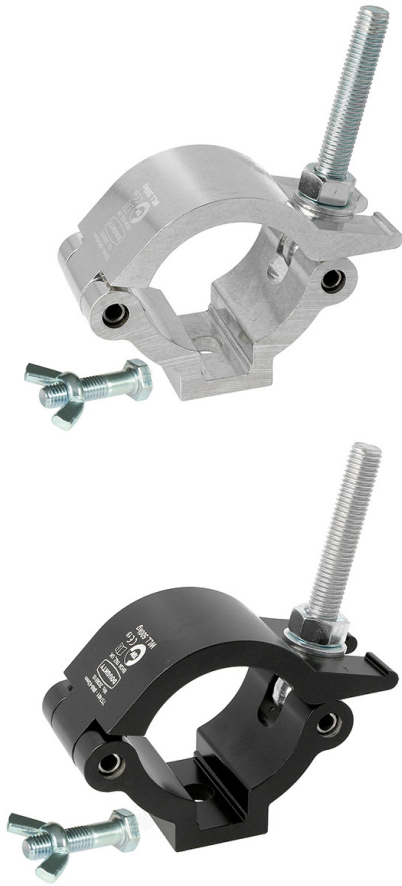




# Mammoth Hook Clamp Coupler



## Product Data Sheet



A high tensile extruded half coupler supplied with fixing kit.	
<b>Part Nos</b>	T57410 - Polished T57411 - Powder Painted Satin Black
<b>Tube Diameter</b>	Ø60 - 63mm (2.36" - 2.48")
<b>Materials</b>	Main Body - AW6082 T6 Aluminium Roll Pins - Stainless Steel Eyebolt Assy - Grade 8.8
<b>Max Tightening Torque</b>	30Nm
<b>Fixings</b>	Supplied with M10 x 35 Bolt / Wing Nut
<b>WLL</b>	500Kg
<b>Weight</b>	0.51Kg (1.13 lbs)
<b>Factor of Safety</b>	5:1
<b>Approval</b>	TÜV Approved

