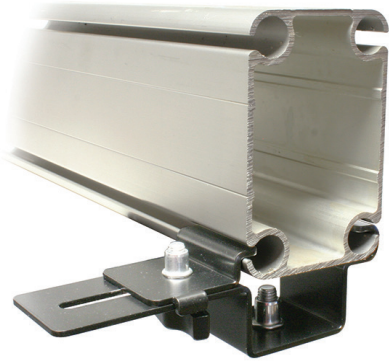




Product Data Sheet

Lightweight Marquee Clamp



A Lightweight Marquee clamp.	
Part Nos	T28865
Fits Beams	80 - 125mm
Material	CR4 Mild Steel
Finish	Powder Painted Black
Max Tightening Torque	Handtight
Weight	0.50Kg
WLL	20Kg
Factor of Safety	5:1

Dimensions in mm

