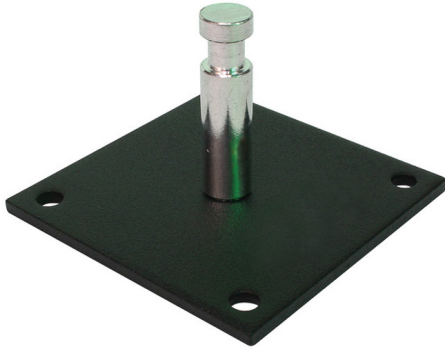




Baby Pin Wall Plate

Product Data Sheet



A mild steel Wall Plate fitted with an aluminium $\text{\O}16\text{mm}$ diameter spigot.	
Part Nos	T54200
Spigot	$\text{\O}16\text{mm}$
Fixing holes	4 x $\text{\O}8\text{mm}$
Finish	Black Powder Paint
Materials	Mild Steel - Plate Aluminium - Spigot
WLL	Not rated
Weight	0.46Kg

Dimensions in mm

